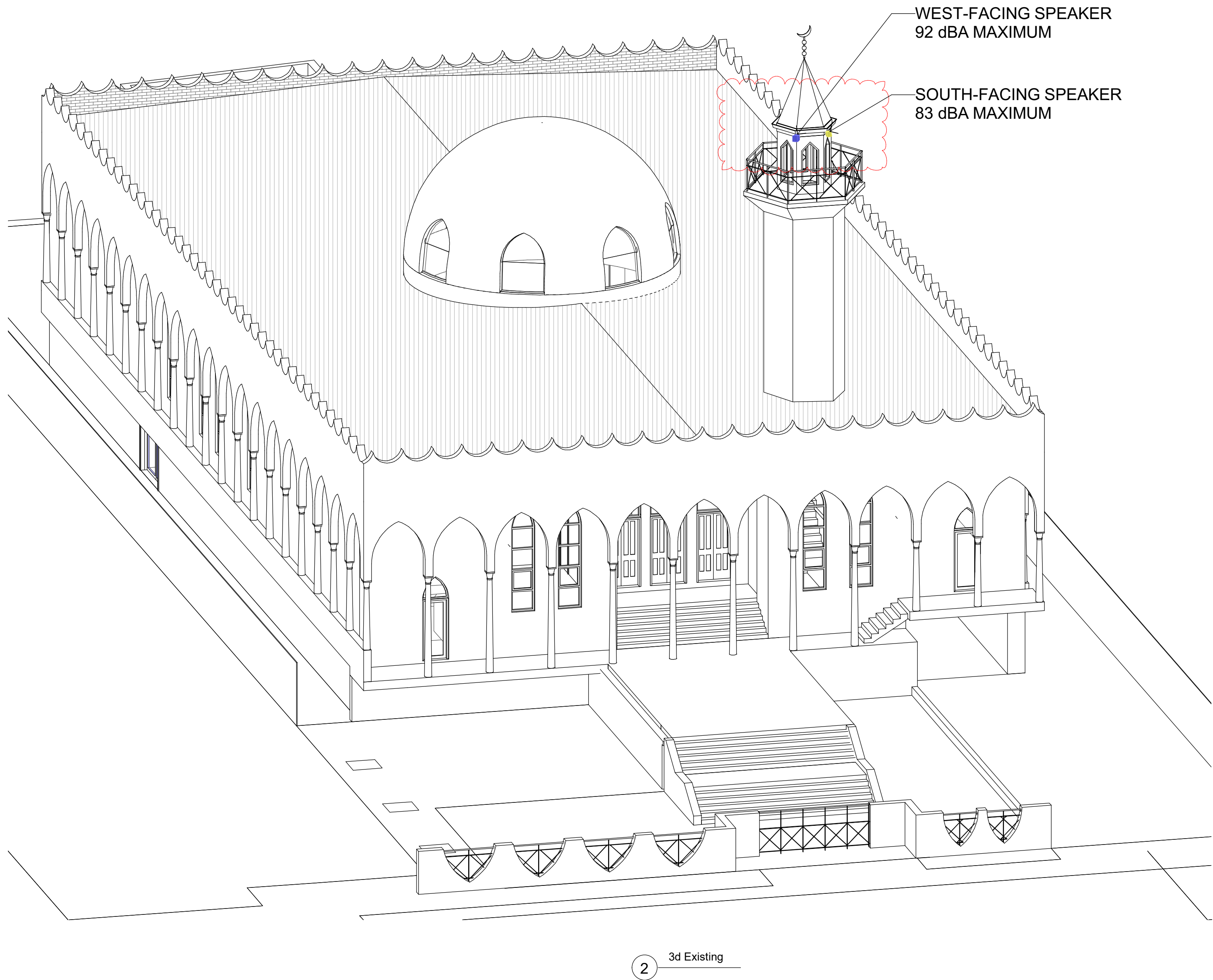


| Regulated Design Board |      |   |                           |         |
|------------------------|------|---|---------------------------|---------|
| Project Address:       |      | 65-67 Wangee Road Lakemba NSW Australia |                           |         |
| Project Title:         |      | Residential Development                 |                           |         |
| Consent No:            |      | -----                                   | Body Corporate Reg No: -- |         |
| Drawing Title:         |      | 3D_MODEL                                | Drawing No: A200          |         |
| Rev                    | Date | Description                             | DP Full Name              | Reg No: |
|                        |      |   |                           |         |
|                        |      |   |                           |         |
|                        |      |   |                           |         |
|                        |      |   |                           |         |
|                        |      |   |                           |         |



High SPL Loudspeaker

The ID-MH Series are high SPL two-way structured plastic cabinet systems with weather and UV resistant housing, designed for medium to long distance sound reinforcement applications.

## Features

- Strong plastic cabinet, weather and UV resistant (IP56)
- High SPL output (80bars/100V)
- Horn loaded HF coaxially mounted with the LF driver providing 100°H x 100°V (ID-MH158 WH) or 80°H x 80°V (ID-MH1512 WH) accurate dispersion.

### Applications

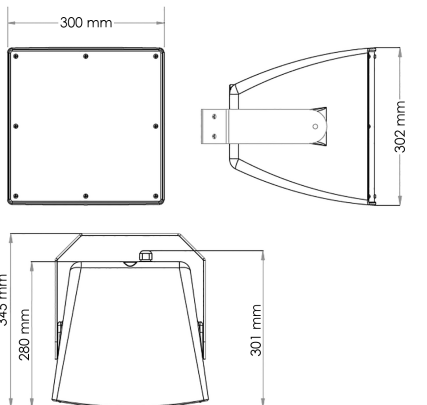
Suitable for long/middle sound reinforcement distances such as: public venues, eg. stadiums, factories, schools and sports grounds.


| MODEL                  | 100H158 WH   |
|------------------------|--|
| Frequency response     | 80Hz-18kHz +3dB  |
| Drivers                | 1" 8" (200mm)/2" voice coil U,<br>1x 1" (25mm) 21.4" voice coil CF |
| Power                  | 100V Line Input 375W/55W/150W<br>8Ω / 15Ω W                        |
| Sensitivity            | 96dB / 1 watt/1 m  |
| Maximum SPL            | 117dB continuous, 123dB peak                                       |
| Impedance              | 8Ω nominal   |
| Dispersion (dB)        | 100° x 100°  |
| Crossover              | 2.5kHz passive   |
| IP rating              | IP55 (Applicable Standards – EN 60529)                             |
| Dimensions (W x H x D) | 300 x 302 x 334 mm   |
| Weight                 | 10kg   |
| UBrackets (included)   | Powder coated 316 stainless steel                                  |


Description and specifications are correct at time of printing. Maybe subject to change without notice.


### Dimensions

iD-MH158 WH



 NORTH-FACING SPEAKER  
92 dBA MAXIMUM  
APPROXIMATELY 18m  
FROM NATURAL GROUND

 EAST-FACING SPEAKER  
90 dBA MAXIMUM  
APPROXIMATELY 18m  
FROM NATURAL GROUND

 SOUTH-FACING SPEAKER  
83 dBA MAXIMUM  
APPROXIMATELY 18m  
FROM NATURAL GROUND

WEST-FACING SPEAKER  
92 dBA MAXIMUM  
APPROXIMATELY 18m  
FROM NATURAL GROUND

|     |      |                         |    |     |      |           |    |
|-----|------|-------------------------|----|-----|------|-----------|----|
| A   | A    | ISSUED FOR COORDINATION |    |     |      |           |    |
| B   | B    | ISSUED FOR COORDINATION | LJ |     |      |           |    |
| C   | C    | ISSUE FOR DA            | LJ |     |      |           |    |
|     |      |                         |    |     |      |           |    |
|     |      |                         |    |     |      |           |    |
|     |      |                         |    |     |      |           |    |
|     |      |                         |    |     |      |           |    |
| Rev | Date | Amendment               | By | Rev | Date | Amendment | By |

GENERAL NOTES:

1. ALL DIMENSIONS AND SIZES ARE IN MILLIMETRES. DO NOT SCALE DRAWINGS. PREFERENCES OF DIMENSIONED MEASUREMENTS TO BE TAKEN OVER SCALE MEASUREMENTS.
2. WALL THICKNESSES DIMENSIONS ARE TO BE TAKEN AS NOMINAL, SIZE ONLY
3. INFORMATION INDICATED IN THIS DOCUMENT MAY BE REFUGED TO THE SAFE AND PROPER FUNCTIONING OF THE PROJECT. DO NOT ALTER ANY DOCUMENT WITHOUT REFERENCE TO THE ARCHITECT.
4. READ THIS DRAWING IN CONJUNCTION WITH RELEVANT CONSULTANT DRAWINGS AND SPECIFICATION.
5. THE WORK OF THE ARCHITECT OR OF ANY OTHER PERSON SHALL BE LIMITED TO THE DESIGN OF THE PROJECT.
6. THE WORK IS TO BE COMPLETED IN ACCORDANCE WITH THE NATIONAL CONSTRUCTION CODE OF AUSTRALIA, AUSTRALIAN STANDARDS, AS/A CODES AND ALL RELEVANT CONDITIONS IN THE TENDERS.
7. THE BUILDING MANUFACTURER SHALL BE RESPONSIBLE FOR THE DIMENSIONS, R. GROUNDINGS AND CONSTRUCTION METHODS PRIOR TO COMMENCEMENT OF WORK.
8. A COPY OF THIS PLAN IS TO BE SUBMITTED BY THE PROPRIETOR TO THE WATERBOARD FOR APPROVAL AS A CONDITION OF THE DEVELOPMENT.
9. THIS DRAWING IS PROTECTED BY COPYRIGHT. IT MAY ONLY BE USED FOR THE PURPOSE FOR WHICH IT IS ISSUED.

### Structural Engineer: Info Project Details

### Hydraulic Services: Info Project Details

Principal Certifying Authority:  
Info Project Details

**Mechanical Services:**  
Info Project Details

### Fire Services: Info Project Details

Landscape Architect:  
Info Project Details

### Electrical Services: Info Project Details

### BCA and Access Consultant: Info Project Details

### Acoustic Engineer: Info Project Details

ISSUE FOR DA

Project: ADDITIONS TO EXISTING BUILDING  
Client: Lebanese Muslim Association

Address:  
67 Wangee Road, Lakemba, NSW 2195

Project No: 0836

Checked:      Drawn

PD                      LJ

Scale@A1: 1:100  
Date: 09/10/2024

Drawing Title:  
3D\_MODEL

Revision:

C

Drawing No:

## A200



**ADS ASSOCIATES PTY LTD**  
 ABN: 99 674 437 444  
 1/7 Murray Rose Avenue  
 Sydney Olympic Park NSW 2127  
 P: 02 9763 1888  
[info@adsarchitects.com](mailto:info@adsarchitects.com) | [www.adsarchitects.com](http://www.adsarchitects.com)  
 NSW Nominated Architect Pavlo Doroch 9170  
 Design Practitioner Pavlo Doroch DEP0000211